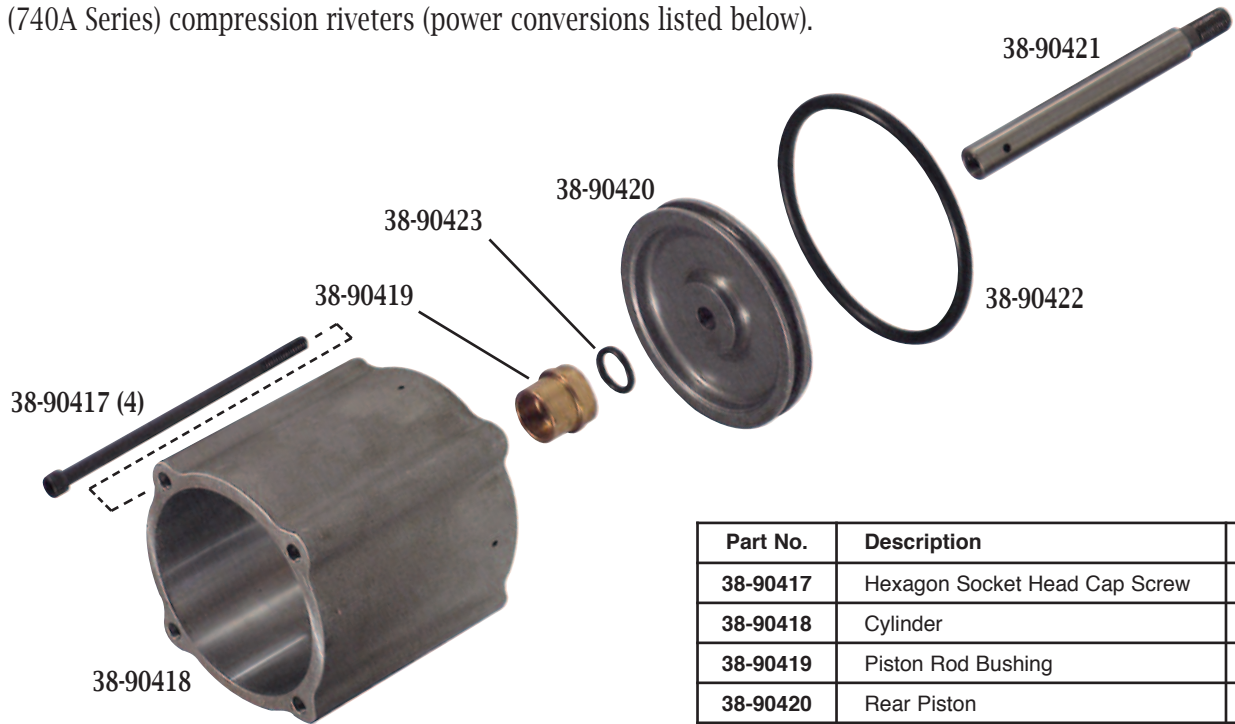




# 38-351B Power Booster Assembly

This conversion unit increases the capacity of a Chicago Pneumatic® (351 Series) or APT® (740A Series) compression riveters (power conversions listed below).



Part No.	Description	Qty.
38-90417	Hexagon Socket Head Cap Screw	4
38-90418	Cylinder	1
38-90419	Piston Rod Bushing	1
38-90420	Rear Piston	1
38-90421	Piston Rod	1
38-90422	"O" Ring	1
38-90423	"O" Ring	1

### WARNING

If you are going to use this converted tool to the maximum capacity listed below, please contact us immediately for other recommended part changes. Under maximum capacity certain parts in the original machine should be replaced.

Model To Convert	From Dural Capacity	To Dural Capacity	From Steel Capacity	To Steel Capacity
351-9-1/8	1/8"	3/16"	3/32"	5/32"
351-7	1/8"	3/16"	3/32"	5/32"
351-5	5/32"	1/4"	1/8"	3/16"
351-2-7/8	3/16"	5/16"	5/32"	1/4"
351-C	3/16"	5/16"	5/32"	1/4"

Toll Free Nationwide & Canada: **800-645-8180**

USATCO\U.S. AIR TOOL COMPANY, INC. [www.USATCO.COM](http://www.USATCO.COM) NEW YORK • CALIFORNIA

Rev0515