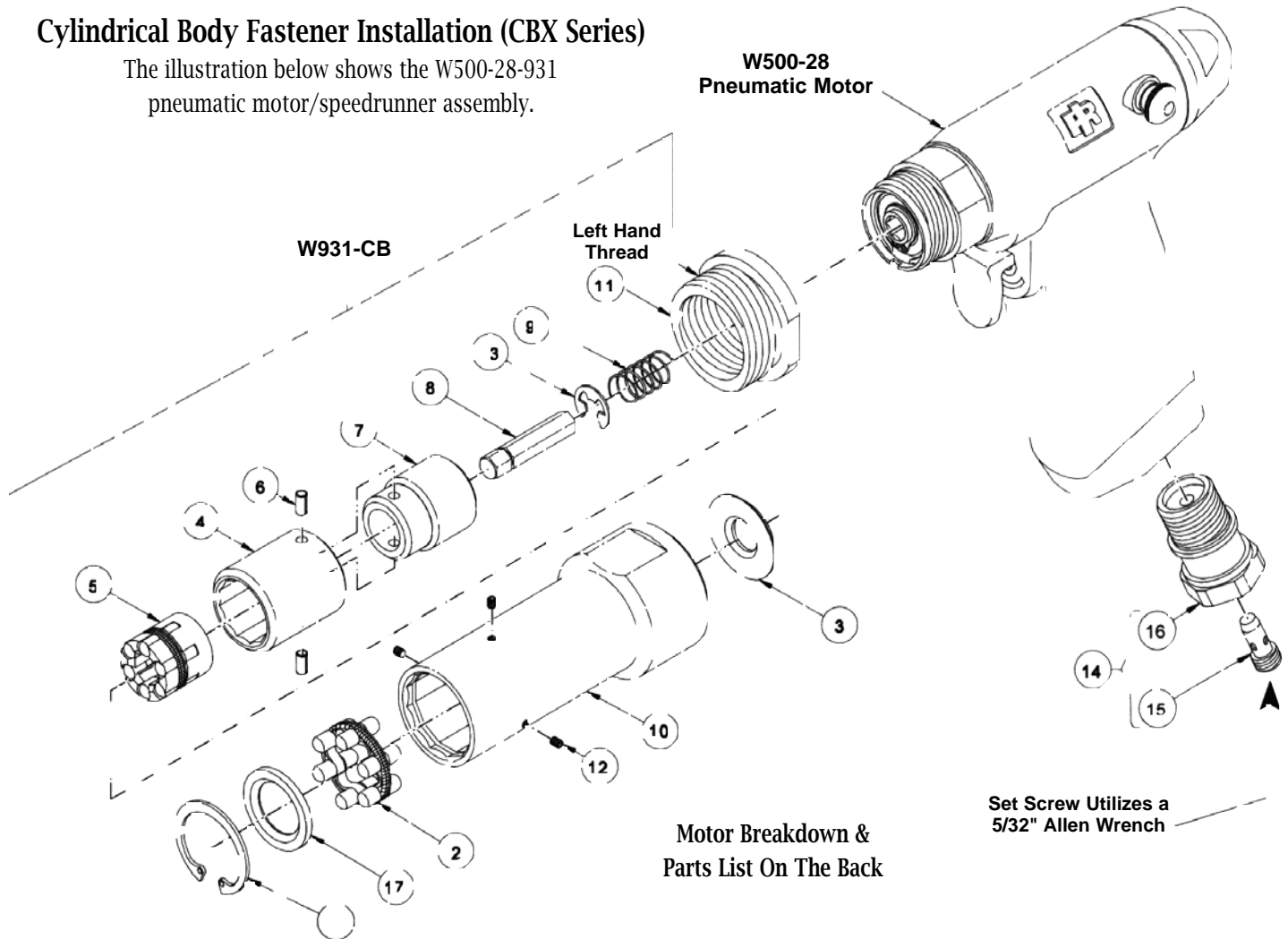




W500-28-931-CB Speedrunner Assembly

Cylindrical Body Fastener Installation (CBX Series)

The illustration below shows the W500-28-931 pneumatic motor/speedrunner assembly.



Motor Breakdown &
Parts List On The Back

Set Screw Utilizes a
5/32" Allen Wrench

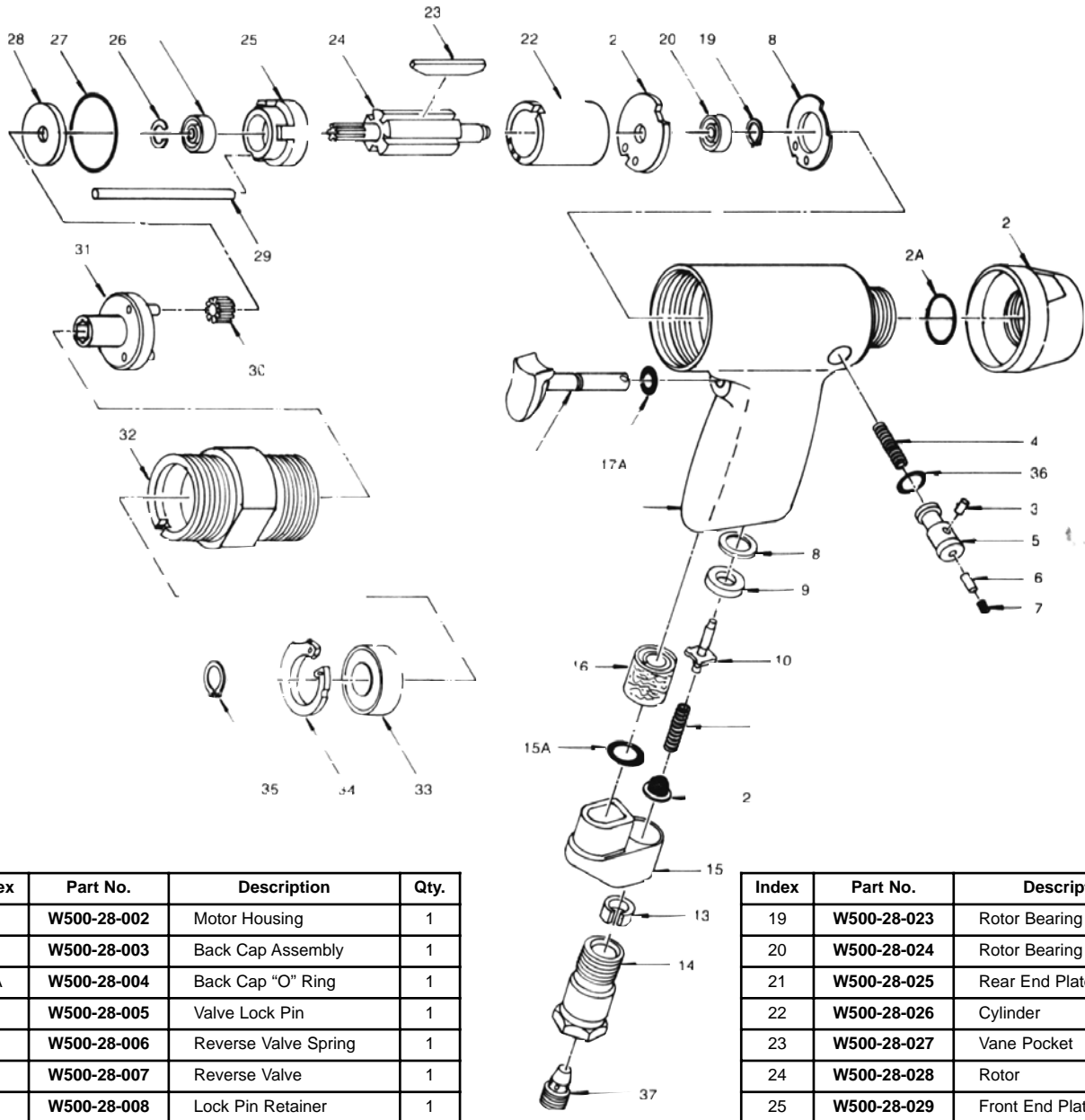
Index	Part No.	Description	Qty.
1	W921-CB-113	Retaining Ring	1
2	W921-CB-123	Body Roller Cage Assembly	1
3	W921-CB-109	Body Washer	1
4	W921-CB-108	Nut Roller Housing	1
5	W921-CB-136	Nut Roller Cage Assembly	2
6	W921-CB-111-2	Roll Pin	1
7	W921-CB-103	Hex Shaft Adapter	1
8	W921-CB-101	Hex Pin	1
9	W921-CB-117	Compression Spring	1

Index	Part No.	Description	Qty.
10	W921-CB-102	Housing	1
11	W921-CB-113	Housing Nut Adapter	3
12	W921-CB-118	#3-48 Socket Set Screw	1
13	W921-CB-119	Retaining Ring	1
14	W921-CB-100	Air Flow Control Assembly	1
15	W921-28-100-002	Air Flow Control Screw	1
16	W921-28-100-004	Air Inlet Bushing	1
17	W931-CB-120	Washer	1
—	—	—	—

Toll Free Nationwide & Canada: **800-645-8180**

USATCO\U.S. AIR TOOL COMPANY, INC. www.USATCO.COM NEW YORK • CALIFORNIA

W500-28 Motor Breakdown & Parts List



Index	Part No.	Description	Qty.
1	W500-28-002	Motor Housing	1
2	W500-28-003	Back Cap Assembly	1
2A	W500-28-004	Back Cap "O" Ring	1
3	W500-28-005	Valve Lock Pin	1
4	W500-28-006	Reverse Valve Spring	1
5	W500-28-007	Reverse Valve	1
6	W500-28-008	Lock Pin Retainer	1
7	W500-28-009	Retainer Set Screw	1
8	W500-28-010	Valve Seat Support	1
9	W500-28-011	Valve Seat	1
10	W500-28-012	Throttle Valve	1
11	W500-28-013	Throttle Valve Spring	1
12	W500-28-014	Inlet Screen	1
13	W500-28-015	Inlet Bushing Spacer	1
15A	W500-28-018	Muffler "O" Ring	1
16	W500-28-019	Muffler Element	1
17	W500-28-020	Trigger Assembly	1
17A	W500-28-021	Trigger Pin Seal	1
18	W500-28-022	Rear End Plate Gasket	1

Index	Part No.	Description	Qty.
19	W500-28-023	Rotor Bearing Retainer	1
20	W500-28-024	Rotor Bearing	1
21	W500-28-025	Rear End Plate	1
22	W500-28-026	Cylinder	1
23	W500-28-027	Vane Pocket	5
24	W500-28-028	Rotor	1
25	W500-28-029	Front End Plate	1
26	W500-28-030	Front Bearing Retainer	1
27	W500-28-031	Clamp Washer Retainer	1
28	W500-28-032	Motor Clamp Washer	1
29	W500-28-033	Cylinder Dowel	1
30	W500-28-034	Spindle Plate Gear	3
31	W500-28-035	Spindle	1
32	W500-28-036	Gear Case Assembly	1
33	W500-28-037	Spindle Bearing	1
34	W500-28-038	Spindle Bearing Retainer	1
35	W500-28-039	Spindle Retaining Ring	1
36	W500-28-040	Reverse Valve Seal	1
37	W500-28-100-02	Air Flow Control Screw	1

USATCO\U.S. Air Tool Company, Inc.

Eastern Division60 Fleetwood Ct., Ronkonkoma, NY 11779-6907 tel: (631) 471-3300 fax: (631) 471-3308

Western Division1219 W. Mahalo Place, Rancho Dominguez, CA 90220-5446 tel: (310) 632-5400 fax: (310) 632-3900